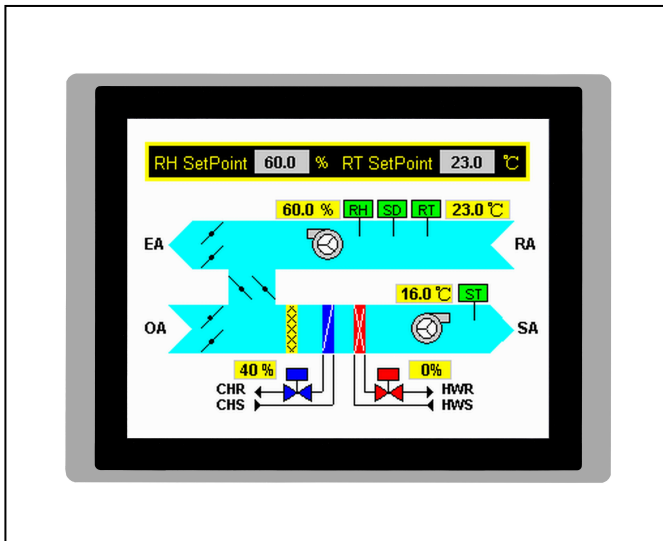


DAK-1150 Series

Touch-Screen Operator Panel Operator Interface



GENERAL

The DAK-1150 series Touch-Screen Operator Panel is a Human Machine Interface for the ASI DDC or Modbus communicating controllers. The touch-screen operator panel allow for easy and self-explanatory operation by fingertip or touch-pen.

The DAK-1150 series supports up to 10 languages (any Windows supported language can be specified), Unicode system and supports BMP, JPG and GIF graphic formats. The data display in numerical, text and graphic. It allows the display controller status, the modification of setpoints and schedules, intervention in controller operation via overrides, and to annunciate and acknowledge alarms.

FEATURES

- Touch-Screen panel operation by fingertip or touch-pen
- Provided RS-232, RS-422, RS-485, Ethernet and USB communicating interface
- Provided ASI or Modbus communicating driver
- Supports up to 10 languages and Unicode system
- Supports BMP, JPG and GIF graphic formats
- Data logging, alarms and historical alarm list
- 9 password levels protection
- Allows the display controller status, and to annunciate and acknowledge alarms
- To intervene in controller operation via overrides
- Allows modification of setpoints, schedules and monitors status

The DAK-1150 series provided RS-232, RS-422, RS-485, Ethernet and USB communicating interface and ASI or Modbus communicating driver. The DAK-1150 series interacts with the controllers on the system communicating bus. The leaves the system bus free for communication with other controllers and/or the Building Management and Control System (BMCS). Data from one or more controllers can be placed on a series of screens. The choice of data to be displayed is made at the time the DAK-1150 series is configured. The configuration is kept in non-volatile memory so that it does not lose program data during power interruption.

The DAK-1150 series is page based. The operator can select one of its pages. Scrolling up or down the page accesses data. The page structure allows rapid access to data. Numeric data can be scaled, or used to display one of a list of messages. Binary data can display different on and off label. Controller labels such as Description, Input, Output and Schedule Name can be displayed as strings.

SPECIFICATIONS

Models:

DAK-1150C

Power Supply:

24 Vdc ($\pm 10\%$), 50/60 Hz, 25 W

Display Type:

TFT LCD, 65535 colors

Display Size:

15 inches

Display Resolution (pixels):

1024 x 768

Central Processing Unit:

RISC ARM9 32-bit CPU

Operating System Memory:

64M Bytes

Programming data Memory:

8M Bytes (Max. 128M Bytes expandable)

Battery Backed Memory:

128K Bytes (Max. 1M Bytes expandable)

Serial Communication Ports:

- COM1: RS-232/RS-422/RS-485
- COM2: RS-232/RS-485 or RS-422/RS-485 or RS-232 with RTS&CTS
- COM3: RS-485

Network Communication Ports:

1 Ethernet port

USB Communication Ports:

2 ports, USB Host x 1, USB Client x 1

Communications Speed:

- COM1, COM2, COM3: Maximum 187.5K bps selectable
- Ethernet: 10/100M bps
- USB: Maximum 12M bps

SD Card:

Expandable

Screen Type:

5-wire resistive, 4 degrees surface hardness and minimum 1 million times operational life

Touch-Screen Operation:

Operation by fingertip or touch-pen

Support Languages:

Up to 10 languages
(Any Windows support languages can be specified)

Password Protection:

9 password levels

Support Graphic Formats:

BMP, JPG and GIF

Character Display:

6 x 8 to 96 x 96 dot font (Windows built-in)

Clock:

Real Time Clock

Back Light:

LED back light and over 20,000 hours lifetime

Vibration Testing:

10 ~ 55 Hz
(30 minutes testing at X, Y, Z direction 1G Hz shaking)

Certifications:

- CE: EN61000-4-2, EN61000-4-4
- EMI: FCC Part 15 Class A
- RoHS Compliance

Protection Class for Front Panel:

IP66

Dimensions:

399.1 x 297.6 mm (W x H)

Mounting:

Panel mounting

Cutout Dimensions:

384.5 x 283.0 mm (W x H)

Operating Rating :

-10 ~ 60 °C, 10 ~ 90 %RH (non-condensing)

Storage Temperature:

-20 ~ 60 °C